

Hádky - Kdo jsem ?

Žiji doma nebo na farmě a začínám na K.

Jsem pták, umím létat i plavat a začínám na L.

Jsem noční pták, chytám myši a začínám na S.

Jsem domácí zvíře, hlídám dům, začínám na P.

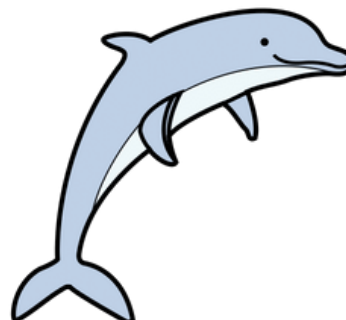
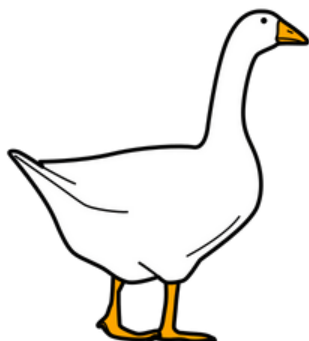
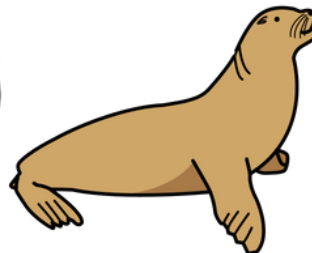
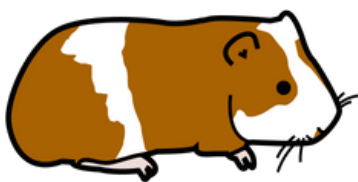
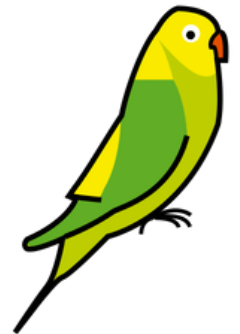
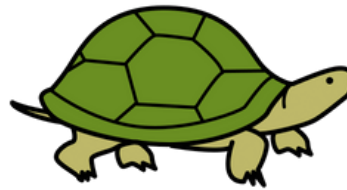
Chodím pomalu , jsem zelená a začínám na Ž?

Plazím se po zemi, začínám na H?

Jsem pták, mám barevné peří, žiji v džungli a začínám na P.

Žiji v moři , chytám ryby a začínám na L.

Jsem malé, strakaté, mám rád trávu a začínám na M. ...



Spoj děti a zvířata podle stejných začínajících hlásek



Lukáš



Honzík



Žaneta



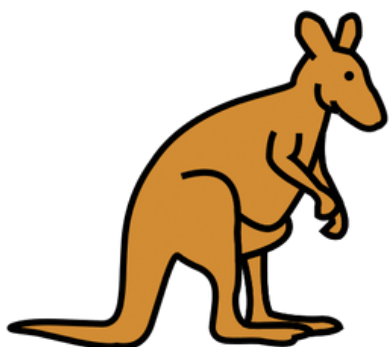
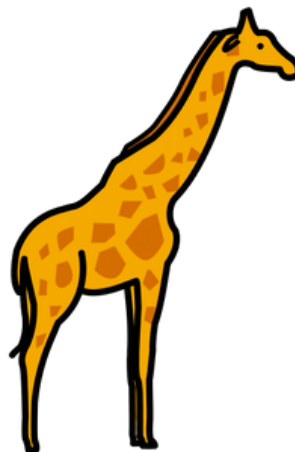
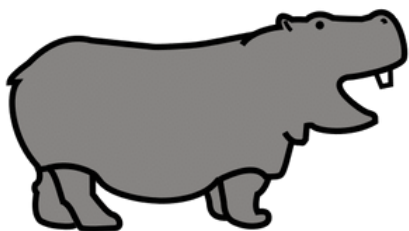
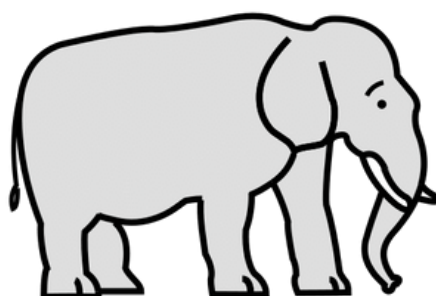
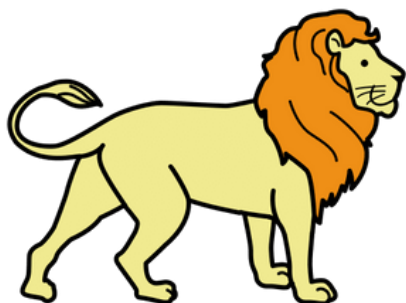
Tomáš



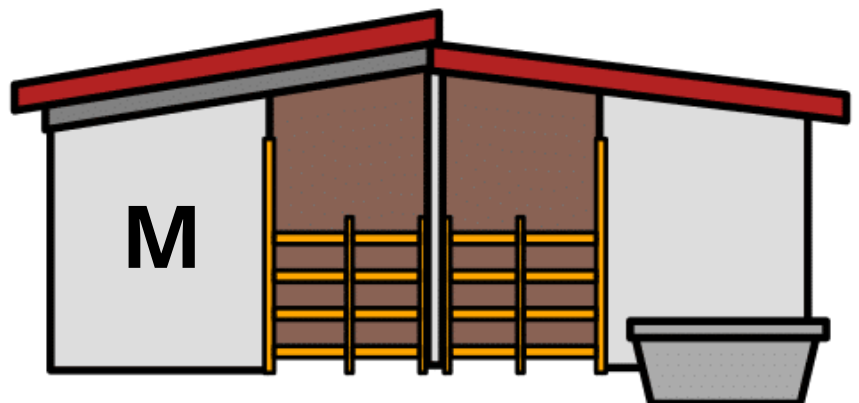
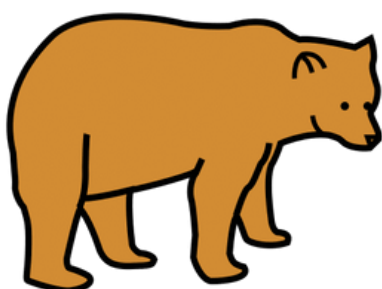
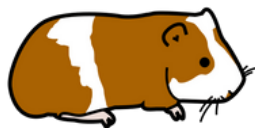
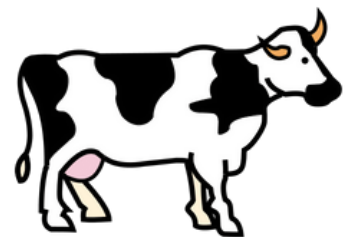
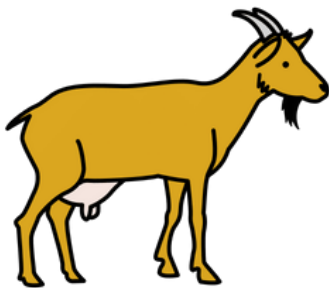
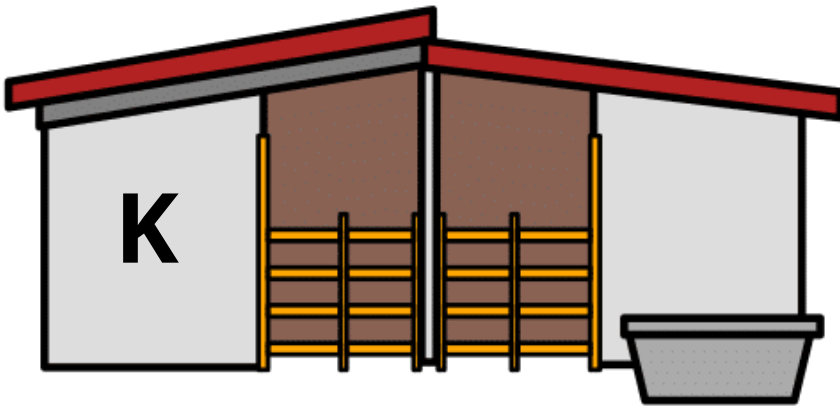
Simona



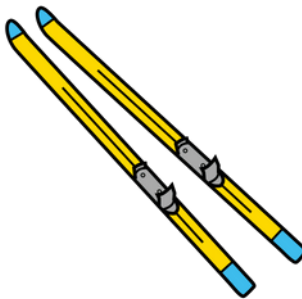
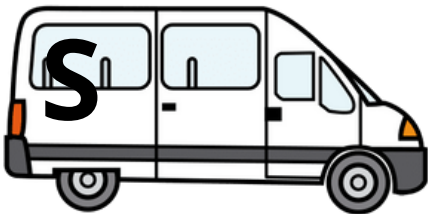
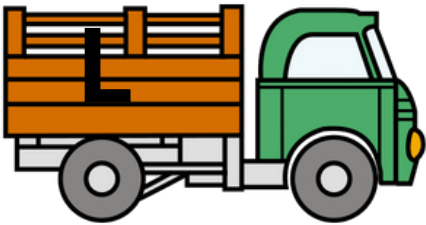
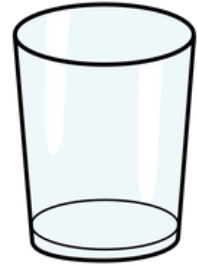
Kuba



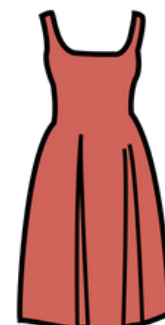
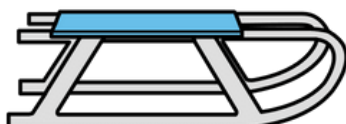
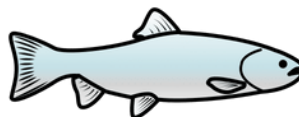
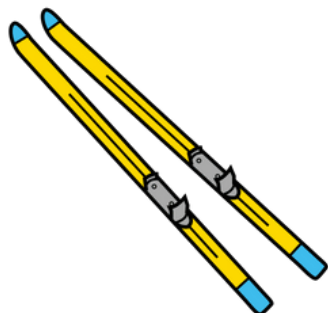
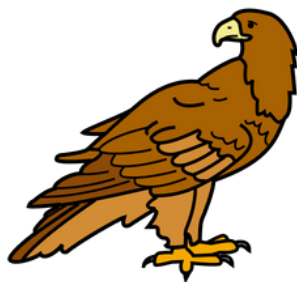
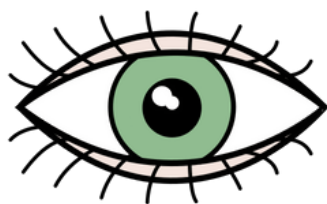
Rozděl zvířata do stájí podle toho, na jakou hlásku začínají.



Přiřaď obrázky k autům podle 1. hlásky



Najdi obrázek, který v řadě začíná na jinou hlásku než ostatní obrázky



Spoj obrázky, které začínají stejně

