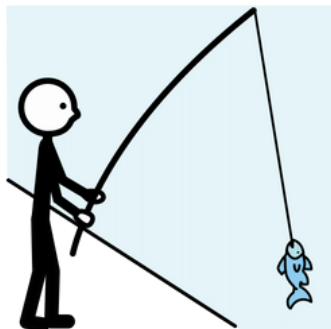


# CH NA ZAČÁTKU SLOVA



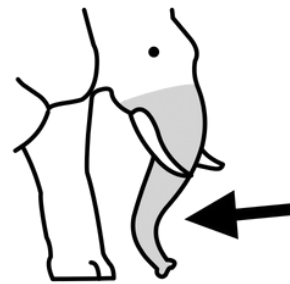
CHA CHA



CHYTÁ



CHOVÁ



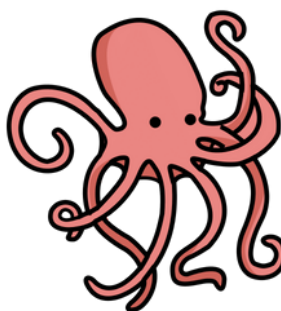
CHOBOT



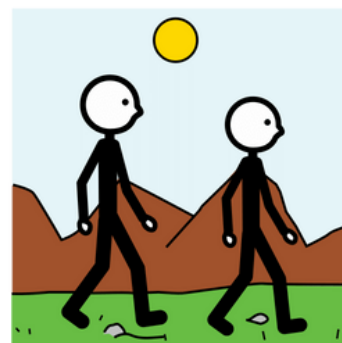
CHATA



CHŮDÝ



CHOBOTNICE



CHODÍ



CHODBA



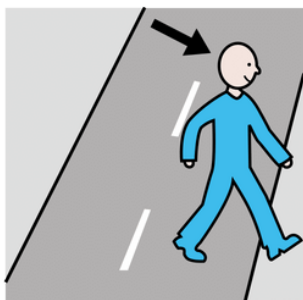
CHODÍTKO



CHUMELÍ



CHUDÝ



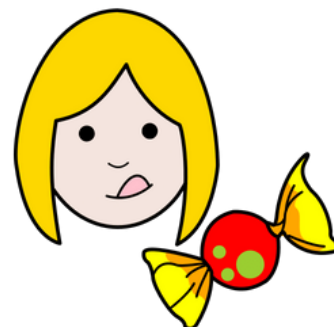
CHODEC



CHYBA

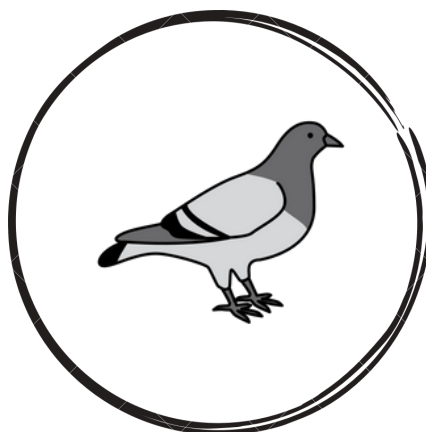
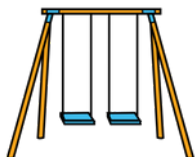
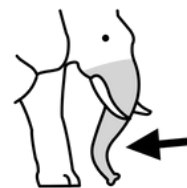
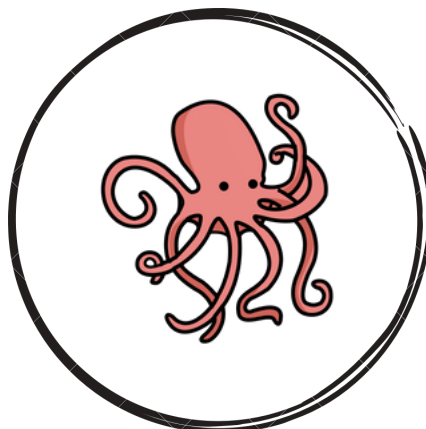


CHALUPA



CHUŤ

**SLOVA, KTERÁ ZAČÍNÁJÍ NA CHO - SPOJ S CHOBOTNICÍ**  
**SLOVA, KTERÁ ZAČÍNÁJÍ NA HO - SPOJ S HOLUBEM**



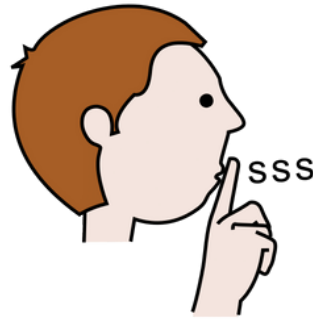
# CH UPROSTŘED SLOVA



MÍCHÁ



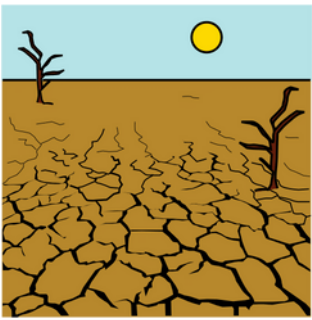
UCHO



TICHO



DÝCHÁ



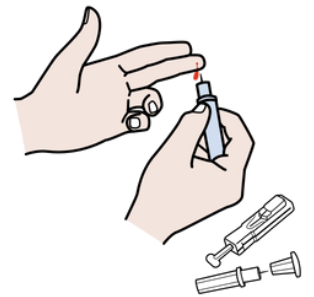
SUCHO



SOCHA



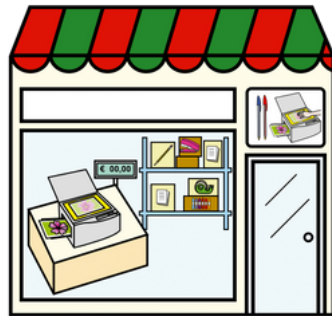
MOUCHA



PÍCHÁ



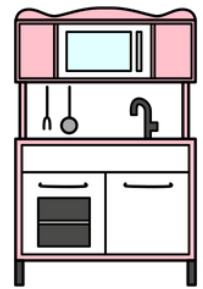
ZÁCHOD



OBCHOD



KÝCHÁ



KUCHYŇ



BOUCHÁ



SLUCHÁTKA

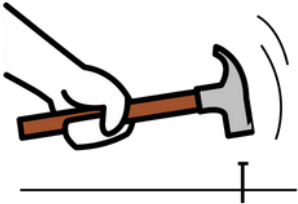


MÍCHAČKA

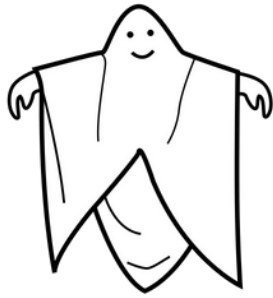


PLECHOVKA

# CH NA KONCI A UPROSTŘED SLOVA



BUCH



DUCH



VÝBUCH



PLECH



ČENICH



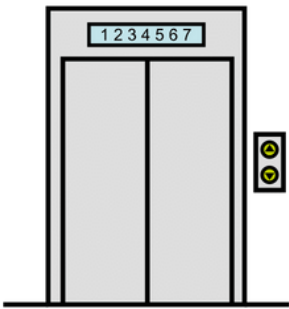
SNÍH



SMÍCH



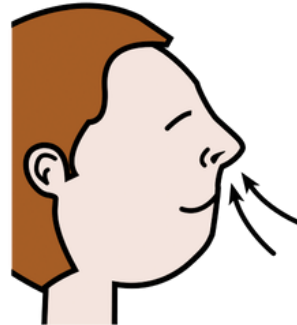
MECH



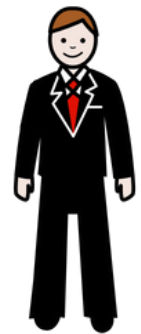
VÝTAH



HOCH



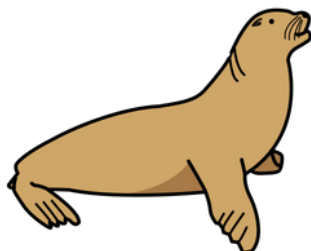
NÁDECH



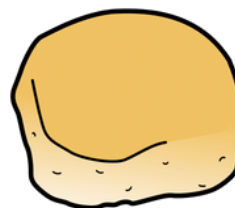
ŽENICH



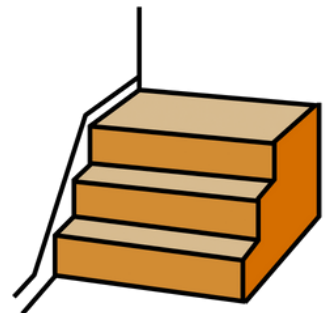
KACHNA



LACHTAN



BUCHTA



SCHODY

# H NA ZAČÁTKU SLOVA



HOKEJ



HAD



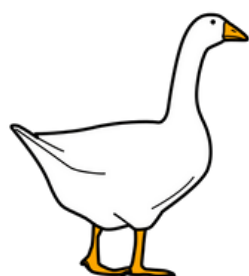
HÁK



HOLUB



HODÍ



HUSA



HEJNO



HASIČ



HODINKY



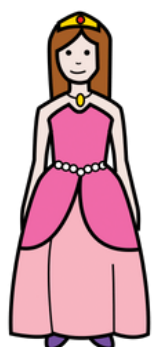
HOLINKY



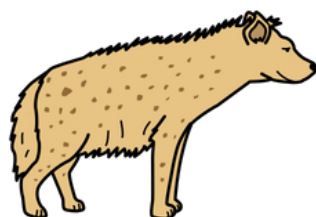
HONÍ



HOLÍ



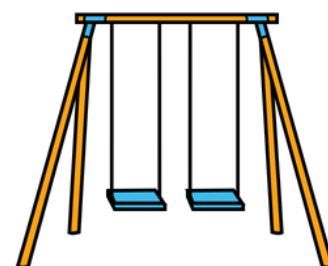
HEZKÁ



HYENA



HOUBA



HOUPAČKA

# H VE SLABICE



AHOJ



DUHA



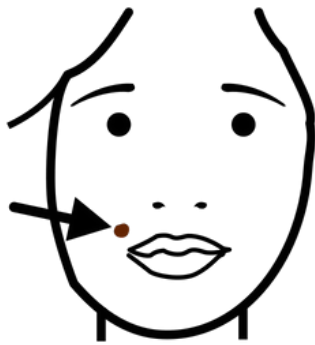
NOHA



BĚHÁ



KOHOUT



PIHA



NAHÝ



OHEŇ



POMÁHÁ



TAHÁ



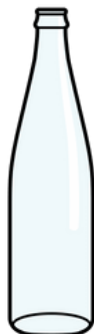
JAHODA



VÁHA



KNIHOVNA



LÁHEV



LEHÁTKO



POHÁDKA